

Study Programmes

The University of London offers a wide range of subjects for study at a distance; from full degree programmes to diplomas, certificates and shorter courses.

Undergraduate

Access route	Divinity	Italian
Accounting	Economics	Italian and French
Accounting and Finance	Economics and Finance	Law
Accounting with Law	Economics and Management	Law with Accounting
Banking	English	Law with Management
Banking and Finance	Finance	Management
Business	French	Management with Law
Business Administration	French and German	Mathematics and Economics
Classical Studies	German	Philosophy
Computing and Information Systems	German and Italian	Politics
Development	History	Politics and International Relations
Development and Economics	Information Systems	Social Sciences
	Information Systems and Management	Sociology
	International Relations	Spanish and Latin American Studies
		Theology

Postgraduate

Agribusiness for Development	Dental and Maxillofacial Radiology	International Primary Health Care
Agricultural Economics	Dental Public Health	Law
Applied Educational Leadership and Management	Economic Principles	Livestock Health and Production
Applied Environmental Economics	Environmental Management	Managing Rural Development
Applied Geographic Information Systems	Epidemiology: Principles and Practice	Open, Distance and Flexible Learning
Biodiversity Conservation and Management	Finance and Financial Law	Organizational Psychology
Business Administration	Financial Economics	Public Health
Citizenship and History Education	Financial Management	Public Policy and Management
Clinical Dentistry (Prosthodontics)	Human Resource Management	Sustainable Agriculture and Rural Development
Clinical Trials	Infectious Diseases	Sustainable Development
	Information Security	Veterinary Epidemiology and Public Health
	International Management	

For details see our website or contact:

The Information Centre, University of London, Senate House,
Malet Street, London WC1E 7HU, United Kingdom.

Tel: +44 (0)20 7862 8360/1/2 Fax: +44 (0)20 7862 8358 Email: enquiries@lon.ac.uk

www.londonexternal.ac.uk

All programmes are developed, written and assessed by academics at the various Colleges of the University. Currently these include: Birkbeck, Goldsmiths College, Heythrop College, Imperial College London, Institute of Education, King's College London, The London School of Economics and Political Science, London School of Hygiene & Tropical Medicine, Queen Mary, Royal Holloway, Royal Veterinary College, School of Oriental and African Studies, UCL.



Postgraduate study in International Primary Health Care by distance learning

Academic direction: **UCL**



2006-2007

www.londonexternal.ac.uk/health

**e-Tutor
team of
the year 2005**

Letter from the Programme Director Professor Trisha Greenhalgh



The vision behind this programme is to develop students' abilities in high quality research, service and teaching in primary care by providing a programme of study characterised by rigorous academic standards, learner-oriented objectives, flexibility and relevance to real-life practice.

The programme is offered at MSc, Postgraduate Diploma and Postgraduate Certificate level. It combines educational methods that encourage self-directed learning, reflection on personal experience and critical thinking with state-of-the-art web technology and the extensive online resources of the University of London. We anticipate that our graduates will make a major contribution to original research, systematic review, teaching and service development in primary care.

It is the world's first fully online postgraduate programme in primary care. My team of academics has been developing, delivering and evaluating web-based modules and short courses since 1998. Our success was acknowledged when our course team won the prestigious 2005 e-Tutor of the Year Award (run by the UK Higher Education Funding Council).

We have worked hard to produce a programme aimed specifically at an international student market, which addresses the many diverse needs of leaders, educators, researchers and change agents working to develop primary health care in different countries and settings. We hope that you find the learning materials and interaction with others helpful to your own work in primary health care, and we wish you every success with your studies on this programme.

Structure

The **MSc degree** consists of three compulsory core modules, one elective module and a dissertation.

The **Postgraduate Diploma** consists of the three compulsory core modules plus one elective module.

The **Postgraduate Certificate** consists of the first two compulsory core modules.

Three compulsory core modules:

- The academic study of primary care (15 credits)
- Research methods for primary care (45 credits)
- International comparisons in primary health care (30 credits)

PLUS one elective module from: (30 credits)

- Getting research into practice and policy*
- Quality improvement in primary care*
- Health informatics*
- Philosophy and psychology of primary care

PLUS one dissertation module from: (60 credits)

- Research dissertation
- Service development dissertation
- Teaching and learning dissertation
- Systematic review dissertation

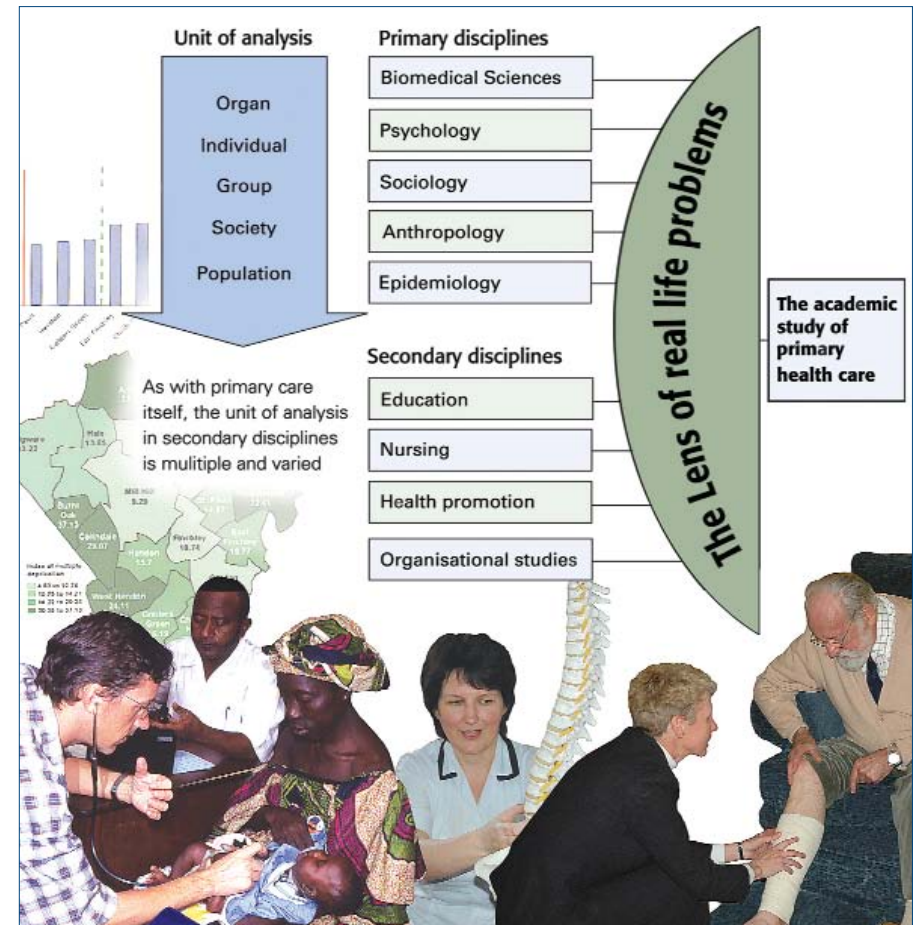
Please note: the modules marked * can be taken as single modules. Also, in order to familiarize yourself with the online learning environment, you must satisfactorily complete an induction module before you register for the programme.

Programme aims and objectives

This is an 'executive' programme aimed primarily at senior clinicians, researchers, policy-makers and leaders in education. Its aim is to promote high quality interprofessional research, teaching, and service development in primary health care in an international context, with specific emphasis on comparisons and contrasts between different health care systems.

On completion of the programme we expect our students to be able to:

- Access, understand and apply published research evidence in a primary care setting
- Develop, evaluate and maintain effective and appropriate health services for populations
- Teach and support others by developing training courses and academic curricula
- Identify and meet their lifelong learning needs.





The University of London

Established in 1836, the prestigious University of London is one of the oldest, largest and most diverse universities in the UK. As a federation of 20 Colleges and a number of smaller specialist Institutes it is recognised nationally and internationally as a centre of excellence. Through its internationally renowned External System, the University also has a long history of providing educational opportunities for students wishing to study at a distance. There are currently more than 34,000 registered External students in over 180 countries. The qualification you receive is of an identical standard to that received by a student who has studied on campus at one of the University's Institutes or Colleges. The University maintains robust and effective quality assurance mechanisms for all its awards.

Flexibility

Studying at a distance is ideal if you have family responsibilities or work commitments. It allows a high degree of flexibility and is particularly appropriate if you travel regularly or have irregular working hours which means that you cannot attend weekly classes.

Time commitment

For individual modules, a reasonable expectation for study and exam preparation would be around 125 hours per 15 credits. You have between three to five years to complete the MSc, between two to five years to complete the Postgraduate Diploma and between one to five years to complete the Postgraduate Certificate.

You will need to study for an average of 10-15 hours per week during term-time (approximately 40 weeks of the year).

Developed by experts

UCL is one of the largest Colleges of the University of London. It was the first institution to offer systematic teaching of medicine. Today, UCL has one of the largest concentrations of biomedical expertise in Europe.

This programme for External students has been developed by UCL's Department of Primary Care and Population Sciences.

The Department is the largest of its kind in Europe. It has nine internationally renowned professors and around 90 academic staff drawn from a range of professional backgrounds including general practice, community nursing, public health, epidemiology and statistics, social sciences, and psychology. The Department has a long tradition of developing and evaluating innovative approaches to both undergraduate and postgraduate teaching. Its many research teams cover a wide range of programmes funded by the World Health Organization, the UK Medical Research Council and Department of Health, and the Wellcome Trust.



An innovative approach to learning

Our teaching and learning model is based on the principles of constructive adult learning. It comprises both static elements (resources) and dynamic elements (online interaction). Static elements include a range of high quality online study materials (journal articles and book chapters via hypertext links from reading lists), supplemented by key textbooks and study packs.

The Online Learning Environment

The dynamic element of the programme is provided through an Online Learning Environment. This is a virtual classroom that enables you to communicate with tutors and other students from around the world.

You will be placed in small groups of between 5-15 for your online group work. Each group is allocated its own tutor who is responsible for both group process (e.g. ensuring that ground rules are established) and academic content.

Within the structured period allocated to each virtual seminar, you will be able to contribute to the conferencing 'discussion' at the times that suit you best. All contributions are stored so that you can make reflective and considered contributions. You are also able to print out a permanent record of all discussions on a particular topic within your tutor group.

Online discussion forums for each module are also available for queries not directly related to the virtual seminar topic.

Assessment

Your progress through the programme will be tested through a combination of assessed coursework and unseen written examinations. The examinations will be designed to assess understanding of broad principles and problem-solving skills, not rote memory. A typical examination question will ask you to comment critically on a published paper, set of data, or a description of a real-life primary care problem. You can study anywhere and can choose where you are assessed. We have a comprehensive network of examination centres which spans over 140 countries worldwide.

"I think the support and obvious commitment of the tutors has been outstanding. This has gone a long way to allaying my fears about whether the effort and the expense will be worth it. //"

Don Eby

Current MSc student and GP, Canada



Entrance requirements

Academic

A second class honours degree, or the equivalent, in an appropriate subject from a university or other institution acceptable to the University.

AND English language

An advanced level of ability to work in English (you may be required to pass, or to have passed within the last five years, at the appropriate level, a test of proficiency in English acceptable to the University).

AND Computing requirements

An IBM-compatible PC, an internet connection and printer (optional).

AND Work experience

At least one year's relevant work experience in primary health care.

Note: Applicants who do not hold the qualifications listed above will still be considered, but we will require evidence of your ability to undertake an advanced course of study.

I chose the MSc in International Primary Health Care because of the very direct connection of the curriculum with the real life challenges of my existing position. //

Catherine McLeod

Current MSc International Primary Health Care student, British Columbia, Canada.

Works as project leader for an urban renewal primary care initiative.

Flexible study

Studying at a distance allows you a high degree of flexibility. Generally you can study whenever, wherever and however you choose.

– fits your needs

You can study for either a full MSc, a Postgraduate Diploma or a Postgraduate Certificate.

– fits your lifestyle

You can fit your study around family and work commitments.

– fits your finances

As there are no requirements to come to London to study, your overall costs to study full time are substantially lower. You will have no travel, relocation or accommodation costs. What's more you can continue working full time.

Fees

Flexible payment – pay upfront or pay as you go: you choose.

MSc	£6,000
Postgraduate Diploma	£3,900
Postgraduate Certificate	£1,900

These fees are made up of: a registration fee (which is on a sliding scale of £600 for the MSc, £300 for the Postgraduate Diploma and £100 for the Postgraduate Certificate), plus £450 per 15 credits. **Students taking a single module for professional development pay a total fee of £1,000.**

The fees shown above refer to the 2006-2007 academic year only. They are subject to annual review. Fees include all core study materials but are exclusive of the cost of sitting examinations outside of London. The cost varies and is payable to your local examination authority.

This course has been excellent. The online software has been very effective and user-friendly, the course material outstanding, the tutors have been very responsive, supportive and expert in their facilitation skills and the overall educational strategies underpinning the course are exemplary. However, its greatest USP (unique selling point) for me is the opportunity to work with people from other professional groups and different countries. This aspect of the course has been hugely enjoyable, inspiring and stimulating! //

Peter Coventry
MSc graduate, UK

The information contained in this leaflet was correct at the date of publication but may be subject to change. The University does not intend by publication or distribution of this leaflet to create any contractual or other legal relation with applicants, registered students, their advisers or any other persons. For the most up-to-date information please visit our website.

Copyright © University of London (November 2005).



How to apply

For further information on how to apply and to download an application form please go to our website:

www.londonexternal.ac.uk/health

If you have any questions or would like information about any of the other programmes we offer, please contact our Information Centre:

enquiries@lon.ac.uk

Summary of key dates

Application deadline	31 May
Registration deadline	31 July
Programme starts	September
Exams take place	June