



RVC

Royal Veterinary College
University of London

Postgraduate study
by distance learning in

**Livestock Health
and Production**

and

**Veterinary Epidemiology
and Public Health**

Academic direction:
The Royal Veterinary College



www.londonexternal.ac.uk/rvc

2008 Entry

Contents

The University of London and the External System	1
About the Royal Veterinary College	2
External programmes from the Royal Veterinary College	3
Introduction to the programmes	4
Short courses for professional development	5
Livestock Health and Production	6
Veterinary Epidemiology and Public Health	7
Distance learning: how it works in practice	8
Computer requirements	10
Course outlines	11
Academic staff	13
Application and registration	16
Entrance requirements	17
Fees	18
Key points	20
Information for students with a disability and/or special needs	21

While every effort has been made to ensure that the information contained in this prospectus is accurate at the date of publication (September 2007), all matters that it covers may be subject to change from time to time, both before and after a student has registered. In particular, information about the structure and content of programmes is subject to confirmation in the Regulations and registered students should refer to these. All fees are subject to annual review. The University does not intend by publication or distribution of this prospectus to create any contractual or other legal relation with applicants, registered students, their advisers or any other persons. You are strongly advised to check our website (www.londonexternal.ac.uk) for any revisions to this prospectus. The University makes no distinction between awards gained by on-campus students in London and External graduates. However, we advise you to check local recognition criteria in your own country before applying for any qualification listed in this prospectus. This prospectus is issued free by the External System, University of London.

Published by: University of London. Copyright © University of London, 2007.

The University of London and the External System

A message from **Professor Jonathan Kydd** Dean, University of London External System

The University of London is proud of the historic and pioneering role it has played in extending university education to all. When the University established its External System in 1858, it broke new ground by becoming the first provider to offer degrees by distance learning. Today, the External System has a truly international character, with more than 40,000 students in over 180 countries.

As a family of world-class institutions, the University has a reputation for academic distinction in teaching and research, both in the UK and internationally.

Ranging from education to management, and from law to philosophy, all courses offered through the External System are developed by academics within the Colleges of the University. This ensures that our awards are recognised worldwide for their quality and value, and that students benefit from the academic rigour and leading-edge research undertaken within the Colleges.

Studying with the University of London is one of the greatest investments you can make in yourself. I look forward to welcoming you into our global community of students and wish you every success.



University of London

The University of London is one of the leading universities in the world. Its world-class federation of 19 Colleges and 10 Institutes provides an unrivalled range of education opportunities of outstanding breadth and quality.

The University of London is unique in its size and federal structure. It is the third oldest university in England. Although in its current form it dates from 1836, the University had for several centuries before this been the centre of learning for law and medicine.

Today the federation includes specialised Colleges such as the Royal Veterinary College and The London School of Economics and Political Science, while others are multifaculty, such as King's and Royal Holloway.

In 1858 the University established the External System specifically for people who could not, or did not, wish to study full time and wanted the option to study at a distance. It offers programmes for those who, perhaps due to financial, career, or family commitments, do not come to London to study on campus.

It maintains robust and effective quality assurance mechanisms for all of its programmes. All graduates, whether they studied on campus or at a distance, achieve an award of the University of London. Equal standards are maintained because academics who teach and assess campus-based students, also develop and write the study materials for the distance learning programmes. They set the examination papers, mark the scripts and provide support.

Fact file:

- Through its External System, University of London degrees have been accessible to students worldwide since 1858.
- Studying at a distance allows you a high degree of flexibility. Generally, you can study whenever, wherever and however you choose.
- Today we have over 40,000 students in over 180 countries.
- Examinations are held in centres in over 150 countries worldwide, as well as in London.
- A global Student to Student Network (an online student database) can be used for mutual support.
- Over 100 programmes are available for study, as well as a wide range of short courses for personal and professional development; visit: www.londonexternal.ac.uk
- We have an active global Alumni Association. As well as organizing events worldwide, the association has partnered with a number of companies to offer members a range of services and discounts.



About The Royal Veterinary College



The Royal Veterinary College is the UK's longest established veterinary school and one of the most highly regarded institutions of its kind in Europe.

The College has over 1,500 students enrolled on undergraduate, postgraduate and continuing professional development programmes and four state-of-the-art teaching and referral hospitals, providing services to the public and the veterinary profession.

The College's reputation for excellence and pioneering work in teaching and research makes us stand out from the crowd, and our independent status enables us to innovate and keep at the forefront of theory and practice.

Postgraduate students learn alongside experts in their field and are provided with the specialist knowledge and skills required to make it to the very top of their chosen profession.

The Royal Veterinary College is one college spread over two campuses, one based in central London and the other in rural Hertfordshire. We are ideally located for all international transport links and within easy reach of London's many other excellent universities and research hospitals.

Study opportunities at the College

Applications for the degrees of MPhil or PhD are also welcomed throughout the year. Applications for admission to the College should be made through the Graduate School. Application forms should not be sent directly to members of academic staff. A short research proposal indicating in which areas the student wishes to specialise, written by the applicant, or the name of a potential supervisor, is required in order that the application can be directed to appropriate potential supervisors. For further information please see:

www.rvc.ac.uk/postgrad

Continuing Professional Development (CPD)

The College runs a range of practical, hands-on refresher courses for practising veterinarians, delivered face-to-face and via interactive e-learning. These courses focus on both the theory and practical application of new techniques.

Forthcoming CPD courses include:

- The exploratory laparotomy: how to avoid the peak and shriek!
- Practical advice for the anxious surgeon
- Maximising post-calving health in dairy cows
- Management in practice: negotiating and communicating for success
- Introduction to thoracic surgery rabbits and rodents

For further information please see www.rvc.ac.uk/cpd

External programmes from The Royal Veterinary College

A message from
Dr Anne Hamblin,
Head of the Graduate School,
The Royal Veterinary College



The Royal Veterinary College's mission is to strive for excellence in its teaching, research and scholarship.

We aim to achieve and sustain a high international, as well as national, standing in higher education teaching and learning; to provide appropriate preparation for career opportunities in the veterinary and associated professions; and to provide a learning environment that encourages the development of students' own interests and skills, with support from teaching staff active in research and/or clinical practice.

These distance learning programmes fall within the scope of the Graduate School, which has been established to support postgraduate student learning. The MSc degrees, Postgraduate Diplomas and Postgraduate Certificates in Livestock Health and Production and Veterinary Epidemiology and Public Health build on our own expertise in this area, as well as drawing on contributions from other national and international experts.

Recognising the importance of Continuing Professional Development (CPD), we also offer parts of our programme to students who wish to take stand-alone Short courses, which you can study at your convenience within busy professional lives. We welcome the opportunity to offer you these subjects through our distance learning programme.



The programmes in this prospectus will be of interest to veterinarians, livestock farmers and scientists who wish to continue their professional and academic development. They have been designed to be of worldwide relevance, and offer options that are suitable for people of diverse professional backgrounds.

We expect that graduates of these programmes will be able to:

- **improve the health and production of livestock**
- **understand the interaction of livestock with people and the environment**
- **gain an overview of the factors that influence livestock production (including components on nutrition, reproduction, disease, welfare and the environment)**
- **implement control strategies by integrating this knowledge with the principles of epidemiology, economics and disease control within the context of management and infrastructure**
- **address the interaction between livestock and the public, in terms of zoonotic diseases and clean food production**
- **communicate effectively on the health of animal and human populations to a range of audiences, including the general public, farmers, politicians and other key policy makers.**

Introduction to the programmes

We offer MSc degrees, Postgraduate Diplomas and Postgraduate Certificates in the field of Veterinary Epidemiology and Public Health and in the field of Livestock Health and Production.

The MSc degree comprises of seven individual courses, the Postgraduate Diploma four individual courses, and the Postgraduate Certificate two individual courses.

The individual courses of the degree can be taken as 240-hour Short courses for Continuing Professional Development (CPD) reasons, or if you do not wish to commit to the full degree. You will be assessed by an examination and tutor marked assignments. On completion, you receive a University of London certificate.

We also offer even shorter courses. They are notional 50-hours and 35-hours of study time. These are ideal for building up CPD hours.

These are assessed by short-answer questions and tutor-marked assignments and allow an easy way for students to undertake a stand-alone unit of learning without committing to a full degree.

Programme	Cost	Description
MSc	£8,250	The MSc degree consists of 7 courses.
Postgraduate Diploma	£4,900	The Postgraduate Diploma consists of 4 courses.
Postgraduate Certificate	£2,585	The Postgraduate Certificate consists of 2 courses.
240-hour Short courses	£1,170	These are the individual courses of the degree. On successful completion of the course a student can apply to transfer onto the Postgraduate Certificate, Postgraduate Diploma or MSc degree.
50-hour Short courses	£425	On successful completion of these courses students may apply to transfer onto an individual course of the degree, or onto the Postgraduate Certificate or Postgraduate Diploma.
35-hour Short courses	£315	Students who complete these courses cannot transfer with credit on to a longer course of study.



RVC graduates (Sally, pictured far right)

'Distance learning gave me the opportunity to gain a postgraduate degree by fitting my studying around a full-time job and rearing three children.

I feel it has been a major achievement in my life. It has acted as a refresher course for my primary degree – 25 years after leaving college – giving me renewed confidence. It has also expanded my knowledge and understanding of other areas that impact on my area of work for the State Veterinary Service. I found the course material interesting and very well presented. I am sure the MSc will improve my chances of promotion in the future.'

Sally Gaynor

MSc in Livestock Health and Production, Ireland

Short courses for professional development



There are three types of Short courses: 240-hour (these are the individual courses of the two degrees), 50-hour and 35-hour. For further details, please see our website: www.londonexternal.ac.uk/rvc. On enrolment, you will receive a certificate of registration. You are sent all materials required to complete the course, plus a specially written Student Handbook.

The following is a sample of some of the subject areas which are covered by both our 35- and 50-hour Short courses.

Examples of 35- and 50-hour Short courses

- Animal welfare
- Animal disease surveillance
- Database management
- Development of a disease control programme
- Introduction to statistics and hypothesis testing
- Principles of farm animal economic analysis
- Principles of food safety control and antibiotic resistance
- Risk analysis and risk assessment
- Veterinary epidemiology

For further information concerning additional courses and specific areas of interest, please contact the Course Administrator at DLP@rvc.ac.uk or telephone +44 (0)1707 666356.

240-hour Short courses

240-hour Short courses are the individual modules of the parent MSc degree/ Postgraduate Diploma/Postgraduate Certificate; they cost £1,170 each. For full details of these courses please see page 11.

35-hour Short courses

Key points

- Students who complete these courses **cannot** transfer onto an individual module of the degree, or onto the full degree/diploma/certificate.
- To register for a 35-hour Short course, please use the Short course registration form enclosed in this prospectus. Please complete and return this with your course fee. Total cost: **£315** (2008).
- Assessment is by a short answer question paper. On successful completion, you will receive a certificate of achievement.

50-hour Short courses

Key points

- These Short courses have been designed as stand-alone courses for Continuing Professional Development, but they also allow you to sample a discrete learning unit. On successful completion of your assignment, you **may** apply to transfer onto an individual course of the degree (this will cost **£750** irrespective of how many Short courses have been passed) or onto the full degree/diploma/ certificate.
- You can apply for the 50-hour Short courses using the application form in the centre of this prospectus. We will inform you if you are eligible for these Short courses within three weeks of applying. If your application is successful, we will send you a registration form. Please complete and return this with your course fee. Total cost: **£425** (2008).
- Assessment is by completion of a tutor marked assignment. You may answer up to three tutor-marked assignments per course. On successful completion, you will receive a certificate of achievement.

Livestock Health and Production



'The MSc in Livestock Health and Production has been a very positive experience for me. The opportunity to update my veterinary

knowledge base has been extremely valuable, but the most valued component of the programme has been the international perspective that it has brought to my professional thought processes. There is an adage which in effect states that, 'those who have plenty to eat have many problems, but those who are hungry have but one'. We, who reside in the developed nations, often take our food supply for granted and fail to remember that for a large portion of the world's population, food and hunger are major concerns. This course of study has brought this message home to me and has given me glimpses into how I might contribute to improving the wellbeing of those less fortunate.'

Gary Ross

MSc in Livestock Health and Production, USA

MSc degree (seven courses)

Three compulsory core courses:

- Animal disease Part 1 (Current concepts)
- Developing and monitoring of livestock production systems
- Principles of livestock production

PLUS four further optional courses selected from:

- Animal disease Part 2 (Infectious and production diseases – a species approach)
- Animal welfare
- Epidemiology and animal health economics
- Economics for livestock development and policy
- Management of infectious viral disease outbreaks in animal populations*
- Reproduction and fertility – a species approach
- Research design, management and grant application writing ♦
- Veterinary public health
- Research project in livestock health and production

Postgraduate Diploma (four courses)

Two compulsory core courses:

- Animal disease Part 1 (Current concepts)

AND one other chosen from the following:

- Developing and monitoring of livestock production systems
- Principles of livestock production

PLUS two other courses chosen from the remaining core course and the optional courses of the MSc degree (excluding the Research project).

Postgraduate Certificate (two courses)

One compulsory core course:

- Animal disease Part 1 (Current concepts)

PLUS one other chosen from the following:

- Developing and monitoring of livestock production systems
- Principles of livestock production

* Expected to be first available in 2009.

♦ Access to the Internet is required (56K dial-up modem or broadband).

Veterinary Epidemiology and Public Health

MSc degree (seven courses)

Three compulsory core courses:

- Epidemiology and animal health economics
- Statistical methods in veterinary epidemiology †
- Veterinary public health

PLUS four further optional courses selected from:

- Advanced statistical methods in veterinary epidemiology †
- Economics for livestock development and policy
- Developing and monitoring of livestock production systems
- Research design, management and grant application writing ♦
- Surveillance and investigation of animal health †
- Research project in veterinary epidemiology and public health

Postgraduate Diploma (four courses)

Two compulsory core courses:

- Epidemiology and animal health economics
- Veterinary public health

PLUS two other courses chosen from the remaining core course and the optional courses of the MSc degree (excluding the Research project).

Postgraduate Certificate (two courses)

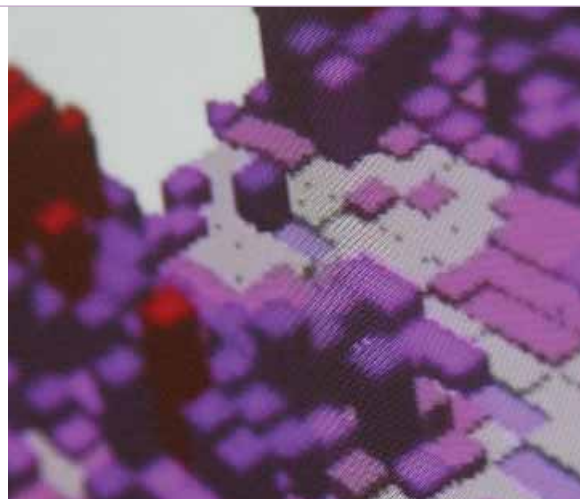
Two compulsory core courses:

- Epidemiology and animal health economics
- Veterinary public health

♦ Access to the Internet is required (56K dial-up modem or broadband).

† There is a minimum computer requirement (please see page 10 for details).

Please note: students are advised to take the compulsory core courses before the optional courses.



'Studying for and completing the MSc in Veterinary Epidemiology and Public Health was a rewarding experience.'

The course is structured in a manner that, in my opinion, offers a useful introduction to and overview of the major issues associated with epidemiology. The course is applied and focuses on key issues of veterinary relevance. The skills acquired are both practical and relevant and could be utilised in almost any sector of the veterinary profession. The distance learning aspect of the course is suitable to all those with busy lives and allowed me to complete the course at my own pace, while meeting family and work commitments. The course material is clear and well presented and is amply supplemented with references and additional reading material. I would therefore have no hesitation in recommending this course to the busiest veterinarians even if, like me, they only have a few hours a week to spare for study.'

Jarlath O'Connor

MSc in Veterinary Epidemiology and Public Health, Ireland.

Jarlath graduated with distinction in December 2005.

Distance learning: how it works in practice



The defining feature of studying at a distance is that you do not need to attend the University in person. People choose to study in this way for many reasons. If your job requires frequent travel or living away from home for extended periods, or your working hours are irregular and you cannot attend classes, studying at a distance may be the only way for you to further your studies. You also avoid the additional travel, accommodation and living expenses of being a full-time student in London.

How we support you

Although the programme is designed to be followed successfully with a minimum of direct academic support, you are able to receive support in several ways:

- Up to three written assignments for each course will be provided for you to complete and submit for tutor comment and guidance. The marks for the best of these will count in the formal assessment process. Although the marks obtained for the other essays do not contribute to the overall assessment, students often find it helpful to receive academic feedback on their work to ensure that they are reaching the required standard. In addition, writing essays can be a useful aid in preparing for examinations.
- You are offered tutorial support for academic matters through the External Programme Office at the Royal Veterinary College. Your enquiry will be answered by an appropriate member of the panel of experts from the RVC academic staff who support this programme. However, the RVC

is unable to provide support on non-academic matters.

- An online discussion board has been introduced for selected courses. This provides the opportunity to collaborate with others via discussion rooms. You will require access to the internet (either dial-up or broadband) to participate. At set times, a tutor will be online to answer questions and we are planning to run tutorials during the academic year.
- Students are invited to allow us to share their contact details with other students studying on the programme in their locality, so that networking and mutual support can be arranged locally if desired.

Study materials

When you first register as an External student you will receive:

- a **Student handbook**, giving you information on planning your studies, preparing for examinations and study techniques
- a **Course pack** for each course you study. This will contain a folder of

directed learning notes, along with a series of readings. The readings will consist of copies of book chapters and articles which have been specially selected from leading academic journals and books. These will present the most concise and readable information and recent developments in the field

- **Textbooks** for certain courses
- **Videos** for certain courses
- **Samples of past examination papers**, and, where a course has previously been examined, an examiner's report
- **CD-ROMs** (for certain courses).

In subsequent years of your registration you will receive:

- an updated Student handbook; the relevant course pack for any additional courses you begin studying; any sample/past examination papers and reports not previously received.

The programme is designed so that you are provided with all the materials you need to study. The materials are comprehensive so you will be able to complete the courses without access to

any additional books or readings. There is, therefore, no need to purchase expensive textbooks, or to spend valuable time in trying to locate journals which may not be available locally.

Period of study and time commitment

Students registering for the MSc degree programmes have a minimum of two years and a maximum of five years in which to complete, whilst Postgraduate Diploma and Postgraduate Certificate students have a minimum of one year and a maximum of five. The 'study year' is effectively between February and September, with examinations in early/mid-October.

Because individuals differ in the number of hours per week they need to devote to study, and in the number of years in which they would like to complete the programme, it is difficult to be precise about the number of hours' study required. A rough guide, however, is that to complete in the minimum period you should be prepared for not less than 10

hours of study per week and 15 hours would be recommended. It is very important that the hours given to study, however many they may be, should be given consistently.

Assessment

Each individual course will be examined by a three-hour unseen written examination, which may contain both essays and shorter questions. You will also be required to submit up to three compulsory written assignments per course, and the one with the highest marks will count as part of the formal assessment. The two elements are weighted as follows: unseen written examination (80%), compulsory written assignment (20%).

Examinations

Examinations take place once a year in **October**. If you fail an examination at the first sitting, you will be allowed one further attempt. Examinations are normally held in a student's country of residence. We have examination centres in over 150 countries worldwide.



'It is one of the best compiled courses I have ever seen! I enjoyed every moment of studying, even if it meant only studying at night. With

the knowledge I have gained, I opened my own business, working in the field of reproduction, and I will never look back!'

Jacoba Joubert

Postgraduate Diploma in Livestock Health and Production, South Africa

Countries with Postgraduate External students include:

Americas

Argentina
Bahamas
Brazil
Canada
Caymans
Colombia
Guyana
Jamaica
Mexico
Trinidad
Uruguay
USA

Africa

Botswana
Gambia
Ghana
Kenya
Madagascar
Malawi
Mauritius
Mozambique
Namibia
Nigeria
South Africa
Tanzania
Uganda
Zambia
Zimbabwe

Western Europe

Austria
Belgium
Cyprus
France
Germany
Greece
Ireland
Israel
Italy
Malta
Netherlands
Norway
Spain
Sweden
Switzerland
UK

Eastern Europe

Bosnia
Bulgaria
Hungary
Kazakhstan
Serbia and
Montenegro

Middle East

Egypt
Lebanon
Oman
Qatar
Saudi Arabia
United Arab
Emirates

Asia (Indian Ocean)

Bangladesh
India
Pakistan
Sri Lanka

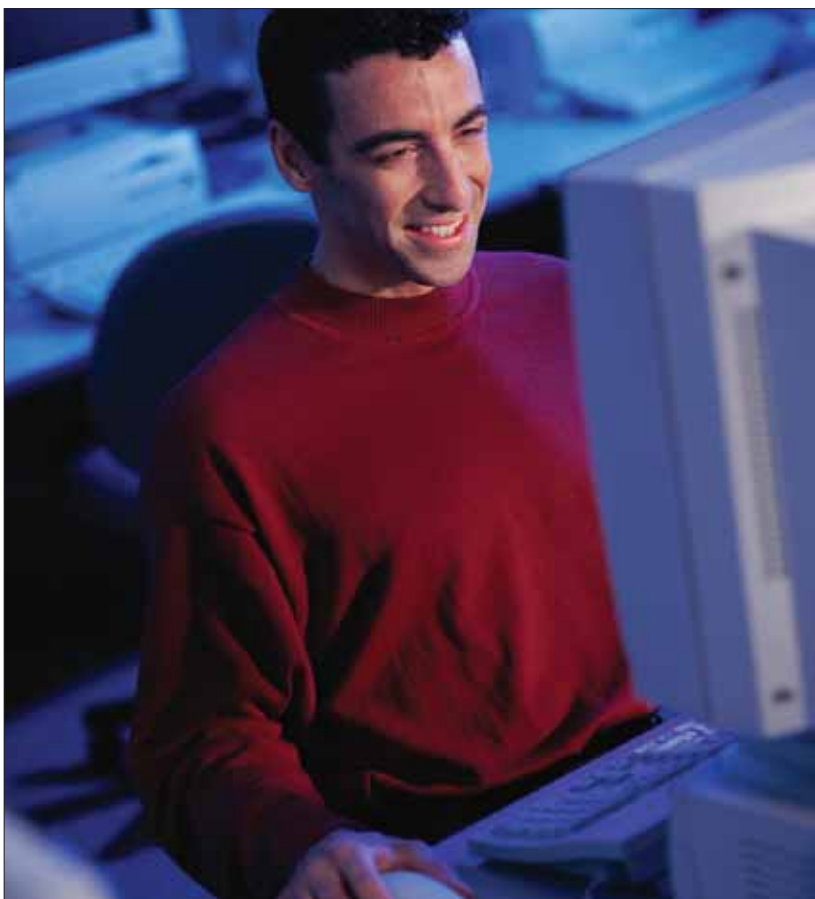
Asia (Pacific)

Australia
Brunei
Cambodia
China
Hong Kong
Indonesia
Japan
Malaysia
New Zealand

Philippines

Singapore
Thailand
Vietnam

Computer requirements



Computer requirements

For the courses in 'Statistical methods in veterinary epidemiology', 'Advanced statistical methods in veterinary epidemiology' and 'Surveillance and investigation of animal health' there is a minimum computer specification.

- Industry-standard personal computer (please note that Macs are NOT suitable as some of the software is not compatible)
- Pentium-class processor or better (Pentium III MHz or higher recommended)
- RAM 32MB minimum (128MB or higher recommended)
- CD-ROM drive, double speed (or faster recommended)
- Pointing device: Mouse
- Display: Resolution 640 x 480 (minimum), 1024 x 768 (recommended); 256 colours (minimum), 65536 colours or higher (recommended)
- Windows 95, 98, 2000, XP Windows NT4 or higher
- 10GB of hard disk space.

Important note about software

Students intending to study the Short course/optional module, 'Advanced statistical methods in veterinary epidemiology' (Course code 667 0013) will require access to 'Arc View 3.2' or 'Arc View 3.3' GIS software. The cost of the GIS software is NOT included in your course fees. You will need to purchase this software if you do not have access to it. A reduced licence fee has been negotiated with the software provider for students registered with the External System.

Details of how to purchase the software at the reduced fee will be sent to you on registration. The GIS software used on this course is subject to a US export embargo, which covers a small number of nations. The list of countries affected by the embargo can be found on the following website:

<http://www.treas.gov/offices/enforcement/ofac/programs/index.shtml>

You are strongly advised to visit this website before registering for this module.

Course outlines

The individual courses of the MSc degrees, Postgraduate Diplomas and Postgraduate Certificates can also be studied as stand-alone 240-hour Short courses for Continuing Professional Development, allowing students to sample a discrete learning unit. The cost of registering for an individual course of the degree is £1,170 in 2008. On successful completion of the course a student may apply to transfer onto the related MSc degree, Postgraduate Diploma or Postgraduate Certificate.

Compulsory core courses

Animal disease Part 1 (Current concepts)

(Course code 667 0001)

This course will enable the student to appreciate the external and internal components of health, agents of disease and how animals respond to them, at an individual and population level. Subject areas: immunology; parasitology; microbiology; introduction to veterinary epidemiology; principles of veterinary pathology.

Developing and monitoring of livestock production systems

(Course code 667 0003)

This course will adopt a farming systems approach to livestock production. The evolution and classification of modern farming systems will introduce a critical appraisal of husbandry systems that are appropriate for different farming systems around the world. Topics will include: introduction to farming systems; development, monitoring and appraisal of farming systems; including organic farming systems; genetic, environmental and welfare issues that affect animal production in the developed and developing countries.

Epidemiology and animal health economics

(Course code 667 0004)

This course will enable students to understand the role of epidemiology and economics in the design and delivery of effective veterinary services aimed at improved animal health and productivity. Subject areas: introduction to statistics; introduction to veterinary epidemiology

– basic principles, descriptive epidemiology, study design, sampling, quantitative aspects of diagnostic testing; animal health economics – principles, partial budgets, decision tree analysis, cost-benefit ratio, economics and project planning.

Principles of livestock production

(Course code 667 0002)

This course will enable the student to understand how feeding, breeding, management and interaction with the environment influence animal production and disease. Subject areas: general principles of nutrition; specialised areas of nutrition (students will select three of the following options which must include at least one ruminant and one non-ruminant choice: feeding dairy cows; feeding dual-purpose, beef and draught cattle; feeding sheep and goats; pig nutrition; poultry nutrition; nutrition of horses, camelids and rabbits. In all the above cases, consideration will be given to the different resources available in temperate and tropical/subtropical regions); environmental studies, including climatic effects and housing; genetics; the physiology of growth and lactation; the relevance of reproduction to livestock production.

Statistical methods in veterinary epidemiology

(Course code 667 0012)

The objectives of this course are to introduce statistical methods used in veterinary epidemiology to enable students to conduct multi-variable analysis and statistical modelling of epidemiological data. Subject areas: introduction to measures of effect;

analysis of cohort studies and case-control studies; likelihood, multivariable analysis and statistical modelling; simple logistic model, logistic regression, Poisson regression and Cox regression.

Veterinary public health

(Course code 667 0006)

The course will examine the role of veterinarians and other related professionals in the protection of human health through the safe production of foods of animal origin, control of zoonotic disease and environmental contamination. Subject areas: disease surveillance and risk analysis; zoonoses and their control; disseminating information on veterinary public health; quality and safety assurance in food production (meat, milk and eggs); development of disease control programmes.

Optional courses

Advanced statistical methods in veterinary epidemiology

(Course code 667 0013)

This course will provide an introduction to advanced methods of statistical modelling of epidemiological data. Subject areas: analysis of spatial data; advanced aspects of multivariable regression analysis; analysis of correlated data; meta-analysis and systematic reviews; modelling of production data.

Animal disease Part 2 (Infectious and production diseases – a species approach)

(Course code 667 0008)

This course will provide an in-depth examination of diseases of major economic importance in each category of farm animal. Subject areas: an introduction to therapeutics – diagnostic

principles; infectious, production and parasitological diseases of cattle, small ruminants, pigs, poultry (choice of three out of four) or equids, camelids, rabbits and others (choice of one from three); the epidemiology, clinical diagnosis, control and treatment of each disease in both temperate and tropical/subtropical areas, as appropriate, will be considered.

Animal welfare (Course code 667 0016)

This course will give you a comprehensive appreciation of welfare and ethical issues connected with farm animal practice, animal breeding, transport and slaughter, companion animals, laboratory animals, animals used in competition, and wildlife. It will outline ways in which you can resolve ethical dilemmas. It will also give you experience in evaluating current evidence when forming a balanced opinion on animal welfare issues. The activities are designed to challenge your ability to anticipate and solve problems.

Economics for livestock development and policy (Course code 667 0011)

The main focus of this course will be macroeconomics and policy for livestock development under different socio-economic conditions. Topics will include, an overview of livestock production systems, demand for livestock, marketing and international trade of livestock products, and economic policy affecting the state and the market in livestock issues.

Management of infectious viral disease outbreaks in animal populations

This course is not expected to be available to study until 2009. The syllabus for this course will be placed on our website as soon as possible.

Reproduction and fertility – a species approach (Course code 667 0009)

This course will enable students to gain a comprehensive insight into the physiology of reproduction and the management and manipulation of fertility to optimise animal productivity. Subject areas: general principles of reproduction; introduction to reproductive anatomy and physiology; control of breeding; fertilisation, conception and pregnancy; reproductive disorders and disease; embryo transfer and assisted reproduction; reproduction management. Students will be required to specialise in three of the following: cattle; small ruminants; pigs; camelids, rabbits and poultry; equids.

Research design, management and grant application writing (Course code 667 0014)

This course will enable students to undertake a research project, with an appropriate study design to validate a hypothesis and analyse the data, including the presentation of results and writing a grant application. Subject areas: introduction to scientific research and how to formulate a hypothesis; literature search, critical analysis of papers and writing a scientific review; experimental and statistical design in project planning; project management; preparing data for analysis – qualitative data, quantitative data; statistical analysis and analysing the validity of findings; report writing, presentation of data and writing a scientific paper; introduction to grant application writing, planning the project and budget; guidelines to writing a good grant proposal.

Surveillance and investigation of animal health (Course code 667 0015)

This course will provide in-depth knowledge of qualitative and quantitative risk analysis, animal health surveillance programmes and introduce students to disease modelling. Subject areas: qualitative and quantitative risk analysis; design and evaluation of animal health surveillance and control programmes involving multiple herds; farm-level animal disease and production surveillance; introduction to database management; deterministic and stochastic modelling of animal diseases.

Research projects (Course code 667 0200)

Students registered on the MSc may choose to take an optional research project. The objective of this course is to enable the students to conduct a research project and prepare a scientific paper for publication in a peer-reviewed journal. Students are given guidance and supervision from a distance in the following:

- Deriving a suitable hypothesis to base the research project
- Writing a critical literature review
- Designing the appropriate study with experimental and statistical details
- Costing the project and conducting experiments
- Managing the project to obtain relevant data
- Documenting and analysis of results to achieve a conclusion
- Selecting an appropriate scientific journal to publish the findings
- Preparing a paper for publication according to author guidelines of the selected journal.

Academic staff



Ayona Silva-Fletcher

Ayona Silva-Fletcher

Director, Distance Learning

Ayona graduated in veterinary medicine from the University of Peradeniya in Sri Lanka in 1979. She worked as an assistant lecturer at the same university before moving on to postgraduate studies at the University of Aberdeen in the UK. She was awarded an MSc in Animal Nutrition in 1982 and then a PhD on Ruminant Digestion in 1985. Ayona then returned to Sri Lanka and worked as a lecturer in Animal Nutrition at the University of Peradeniya and was involved in development projects on water buffalo. In 1987 she moved to the Royal Postgraduate Medical School at the University of London as a senior research officer working on enteric infections and then in 1992 to the University of Leiden in the Netherlands as a visiting scientist. In 1995 Ayona started working at the Open University in Milton Keynes, UK, and worked on the enteric nervous system and neurogenesis. She was also involved in the development of distance learning courses and has considerable experience in modern teaching and assessment technologies in distance education. Ayona was appointed to her current post in September 2002.



Brian Aldridge

Brian Aldridge

Professor of Production Animal Medicine

Brian graduated with a BVSc from The University of Liverpool in July 1984. After graduating he completed an MS at Colorado State University and then enrolled in a PhD programme in the University of Wisconsin-Madison. Two successive Post-doctoral appointments followed in 1993 in the Department of Animal Health and Biomedical Sciences, University of Wisconsin-Madison, USA and in 1999, Department of Pathology, Microbiology and Immunology at the University of California-Davis.

Brian was appointed as an Associate Professor, Large Animal Medicine. Duties at the College of Veterinary Medicine, Western University, California in 2003 and Adjunct Professor, College of Agriculture, California State Polytechnic University. Brian now holds the post of Professor, Production Animal Medicine at The Royal Veterinary College.

Brian has been a participant in a broad tapestry of experiences during his veterinary career, ranging from general practice to training and participation in large animal tertiary care clinical medicine, from performing field and clinic-based research to the development of a molecular programme for examining the host-pathogen interface and population immunogenetics, to designing and promoting a new veterinary school pedagogy for clinical skill instruction.



Dirk Pfeiffer

Dirk Pfeiffer

Professor of Veterinary Epidemiology

Dirk graduated in veterinary medicine in Germany in 1984. He worked as a field veterinarian in Colombia and with development projects in Kenya, Somalia, Malaysia and Thailand until 1988, being awarded a Postgraduate Diploma in Tropical Veterinary Medicine in 1986. From 1988, Dirk was based for 11 years at Massey University in New Zealand, initially as Lecturer in Production Medicine and Epidemiology, and from 1996 as Senior Lecturer in Veterinary Epidemiology. In 1994, he was awarded a PhD in Veterinary Epidemiology. In 1999, he was appointed Professor of Veterinary Epidemiology at the Royal Veterinary College.

Dirk teaches epidemiology at undergraduate and postgraduate levels and has designed and taught international training courses in veterinary epidemiology, risk analysis and spatial analysis in Europe, Australia, New Zealand and Malawi. His particular interest is the epidemiology and control of bovine tuberculosis. His technical expertise includes field epidemiological and ecological research methods, advanced epidemiological analysis, spatial and temporal analysis of epidemiological data, risk analysis, computer modelling of animal disease, animal health economics and development of animal health information systems. Dirk provides consultancy expertise to the FAO, DEFRA and WHO, among others.



Mark Fox

Mark Fox

Senior Lecturer in Veterinary Parasitology

Mark graduated from the RVC in 1977. After a period in small animal practice, he returned to the College where he studied for a PhD in Parasitology, investigating the pathogenicity of sub-clinical roundworm burdens on the productivity of lactating dairy cattle. He was appointed Lecturer in Veterinary Parasitology in 1982 and promoted to Senior Lecturer in 1994. He is the Co-Director of the Wild Animal Biology and Wild Animal Health MSc courses, which he established in conjunction with the Institute of Zoology at Regents Park. His research interests include the epidemiology and pathogenicity of nematode infections in ruminants. He is a member of the editorial board of the Journal of Comparative Pathology, the Higher Education Academy and a Diplome of the European Veterinary Parasitology College.

Alun Stedman

Lecturer in Animal Nutrition, Senior Tutor Principles of Livestock Production Course

Alun was awarded his BSc in Food Technology at Reading University, followed by a Diploma of Nutrition, and then a PhD on the subject of protein utilisation by ruminants, at Cambridge University. He has also worked in the poultry industry. Since 1978, Alun has lectured in Nutrition at the Royal Veterinary College, specialising in ruminant



Alun Stedman

metabolism. His research interest lies in heavy metal transfer along the food chain.

Anne Hamblin

Reader in Immunology and Head of the Graduate School

After graduating from the University of London in 1972, Anne was awarded her PhD in Cell Biology from the Institute of Cancer Research. Her long career in immunology began with the Kennedy Institute of Rheumatology in 1972, moving on to St Thomas' Hospital (London) as Lecturer in Immunology in 1978. In 1983, Anne was promoted to Senior Lecturer, initially with St Thomas' and, latterly, with the Royal Veterinary College, where she was promoted to Reader in Immunology in 1994. Anne currently continues to teach immunology to both undergraduate and postgraduate students, including those studying on the RVC distance learning courses. As Head of the Graduate School, she is responsible for the development of all postgraduate courses (at Diploma, MSc and PhD level) as well as the College's CPD provision.



Anne Hamblin

Steven van Winden

Lecturer in Production Animal Medicine

Steven acquired an early interest in cows as he was born on a dairy farm in The Netherlands. After graduating from Utrecht University, he worked for three years as a clinician on internal medicine and nutrition of large animals (horses, cattle, sheep, goats, and pigs). Steven then focussed on cattle, getting experienced in surgery, obstetrics and herd health. Whilst working at Utrecht University he gained his PhD and an MSc in Epidemiology. Subsequently he spent two years at an independent institute for cattle and swine nutrition (Schothorst Feed Research, Lelystad, NL). Since 1 July 2004 Steven has been employed by the Royal Veterinary College, where he teaches at undergraduate and postgraduate level.



Steven van Winden



Jonathan Rushton

Jonathan Rushton

External Consultant, Programme Manager, FAO

Jonathan graduated in Natural Sciences from Cambridge University, UK and then completed a Masters and a PhD in animal health economics from the Veterinary Epidemiology and Economics Research Unit, University of Reading, UK. Dr Rushton has worked on animal health issues in Africa, Asia, Europe, and Latin America for the EU, DFID, IICA, ILRI, DANIDA, GTZ and USAID. His key interests are the role of livestock in the livelihoods of poor people worldwide, impact of livestock diseases, the use of participatory methodologies in veterinary epidemiology and the marketing of agricultural products. He is currently working on the economics of avian influenza in FAO.

Javier Guitián

Senior Lecturer in Population Medicine

Javier qualified from the University of Santiago de Compostela in 1993. He then studied for a PhD in Epidemiology at the same university and conducted research as a visiting scientist in the USA, Canada, Brazil and Portugal. Javier spent three years working in industry and practising clinical epidemiology. He came back to academia in 2002, first as a Lecturer and since 2006 Senior Lecturer in Population Medicine at The Royal Veterinary College. He is involved in research, teaching and consultancy. He teaches epidemiology,



Javier Guitián

statistics and preventive medicine. His main research interest is the epidemiology of infectious diseases of production animals.

Neville Gregory

Professor of Animal Welfare Physiology

Neville's areas of expertise are Animal Welfare, Farm Animal Production, Vertebrate Pest Control, and Meat Science. He was formerly Professor of Animal Welfare Science at Massey University in New Zealand and he managed a Dairy Research Centre in Australia. He has published six student textbooks including, *Animal Welfare and Meat Science* (CABI Publishing Co.) and *Physiology and Behaviour of Animal Suffering* (Blackwell Publishing Co.) which are recommended reading in parts of the distance learning courses. His present research interests include handling practices at livestock markets, wildlife culling methods and stunning methods at slaughter.

Kristien Verheyen

Lecturer in Clinical Epidemiology

Kristien graduated as a veterinary surgeon from the University of Ghent, Belgium, in 1995. After short spells in mixed practice and the pharmaceutical industry, she joined the Epidemiology Unit at the Animal Health Trust near Newmarket, UK, in 1997. Whereas her initial role at the Trust focussed on equine infectious diseases, in 1998 she started working full-time on a large-scale



Neville Gregory

epidemiological study of musculoskeletal injuries in thoroughbred racehorses. During the course of this project, she also studied for an MSc degree in Epidemiology at the London School of Hygiene & Tropical Medicine, University of London, which she completed by distance learning in 2002. She subsequently embarked on a Residency in Equine Epidemiology which allowed her to obtain a PhD on the 'Epidemiology of fractures in racehorses in training' from the University of London in 2005.

Kristien joined the Royal Veterinary College as a Lecturer in Clinical Epidemiology in 2005. Her research activities remain in the field of equine epidemiology, with a focus on the application of epidemiological methods to increase our understanding of the way that bone, tendons and joints respond to physical exercise and the pathogenesis of musculoskeletal disease. She also teaches evidence-based medicine, epidemiology and biostatistics at undergraduate and postgraduate level, including on the resident MSc course in Veterinary Epidemiology.



Kristien Verheyen

Application and registration



How to apply and register

For 35-hour Short courses students register using the registration form for Short courses enclosed in this prospectus and return this with their fee.

1 For the MSc degrees, Postgraduate Diplomas, Postgraduate Certificates, and 240- and 50-hour Short courses, please follow the process detailed below. You can also download the application form from our website or you can apply online for the MSc degree, Postgraduate Diploma and Postgraduate Certificate at: www.londonexternal.ac.uk/rvc

The application form is provided in the centre of this prospectus. Please detach it for your use.

Complete and submit your application form by post as soon as possible, but no later than **1 November**, together with the accompanying documentation listed on the form, to: The Postgraduate Admissions Office University of London, External System Ground floor, Stewart House 32 Russell Square London WC1B 5DN United Kingdom

Tel: +44 (0)20 7664 4808

Email: postgraduate_admissions@london.ac.uk

Please note: faxed applications will not be accepted.

2 When we have received your application form we will send you an acknowledgement and a student number. Please note that we allocate a student number to everyone who applies – it does not mean that you have been accepted onto the MSc degree, Postgraduate Diploma, Postgraduate Certificate, or for a Short course. If you have not received an acknowledgement **within three weeks** of sending in your form, please contact the Postgraduate Admissions office with details of your full name, the programme for which you have applied and the date you posted your form.

3 We will notify you whether or not you have been accepted.

Note: applications will only be considered when we have received all the necessary documentation, including the references, where applicable.

4 If you are accepted, you will be sent:

- an offer of registration
- a fee slip
- a registration form
- a copy of the Regulations.

5 If you decide to register you will need to complete your registration form and fee slip and return these, along with the appropriate fee, no later than **1 January**.

6 Study for the MSc degree, Postgraduate Diploma and Postgraduate Certificate will commence in **February**.

Entrance requirements

MSc

EITHER

a second class honours degree or the equivalent in a scientific subject, veterinary science, animal science, agriculture, biological sciences or medicine;

OR

a second class honours degree in a scientific discipline which has, in the opinion of the University, included suitable training.

Postgraduate Diploma, Postgraduate Certificate, 240-hour and 50-hour Short courses

a degree or a technical or professional qualification and work experience considered appropriate and relevant by the University.

35-hour Short courses

There are no entrance or English language requirements.

English language requirement

All applicants must provide evidence of their English language ability. Applicants whose first language is not English must provide documentary evidence acceptable to the University that the applicant has, no more than three years prior to the application,

either been educated in English (minimum 18 months)

or worked in English (minimum 18 months)

or passed a test of English Proficiency acceptable to the University of London within the past three years – for example IELTS with an overall score of 6.5 with a minimum of 6.0 in each sub-test or TOEFL score of 580 (or 237 in the computerised test) plus 4.5 in the Test of Written English (TWE)/Essay Rating. The University reserves the right to require an applicant to pass at an appropriate level a test of proficiency in English that is acceptable to the University before an offer of registration can be made.

Notes for applicants to the MSc degree, Postgraduate Diploma and Postgraduate Certificate

- There is a definite start to the study year for these courses – February each year. Materials are despatched, usually by courier, from the beginning of January, to all students who have paid the registration and course fees.
- At its discretion, the University will sometimes consider applications received after 1 November. Enquiries should be made to the Postgraduate Admissions Office.

Applicants to the 240-, 50- and 35-hour Short courses should note that there are no application and registration deadlines. Instead, there is a rolling application/registration process throughout the year. For the 240-hour Short courses only you should be aware that there are examination deadlines that have to be met in order to sit exams in October.



I really enjoyed the MSc and despite epidemiology being a challenging subject, the whole course was wide ranging in subject matter and I had a great sense of achievement in overcoming any obstacles. The fact that I was studying in this area enabled me to steer my career path in the right direction and now that I have my MSc, my job prospects have improved further still.

Selene Huntley

Selene graduated with the MSc in Veterinary Epidemiology and Public Health in December 2006, UK



I have found the course to be beneficial for my work, and being registered on it was viewed favourably when I was recently promoted.

Catriona Ritchie

MSc in Livestock Health and Production, UK

Fees

The fees given below refer to the 2008 calendar year only and are subject to annual review. Fees may be paid in one of two ways:

EITHER

On registration a single payment covering the registration fee and all course fees:

Total MSc (this incorporates a discount for payment in advance)	£8,250
Total Postgraduate Diploma	£4,900
Total Postgraduate Certificate	£2,585

OR

Pay the registration fee, plus the fee for each course you are taking in your first year, and then in subsequent years the fee for each new course you take:

MSc registration fee	£1,085
Postgraduate Diploma registration fee	£815
Postgraduate Certificate registration fee	£550
Fee per course	£1,085

Note: The University reserves the right to make additional charges for issuing revised or replacement study materials. In addition to the University's fees given above, if you are sitting examinations overseas, you will have to pay a fee to your local examination authority (this fee will vary).

Short courses

The cost of registering for an individual course of the degree is:

240-hour Short course	£1,170
50-hour Short course	£425
35-hour Short course	£315

Transfer and progression from Short courses

Students studying on 240- or 50-hour Short courses who wish to transfer onto the MSc, Postgraduate Diploma or Postgraduate Certificate should contact:

The Postgraduate Registry
University of London External System
Ground floor, Stewart House, 32 Russell Square
London WC1B 5DN, UK
Tel: +44 (0)20 7862 8377 Fax: +44 (0)20 7862 8238
Email: postgraduate.registry@london.ac.uk

Students wishing to transfer from a 50-hour Short course onto the MSc degree, Postgraduate Diploma or Postgraduate Certificate will first need to complete the related 240-hour Short course. The transfer fee for students who switch from 50-hour to 240-hour Short courses is £750 (irrespective of the number of 50-hour Short courses taken).

Please note: students studying on 35-hour Short courses cannot transfer onto the degree.

Financial assistance

No financial assistance is available from the University. Some employers in both the public and private sector may offer financial assistance to their employees.

Students who are resident in the UK may be able to apply for a Career Development Loan. Information can be obtained from the Direct.gov website (www.direct.gov.uk/cdl) or from the CDL Information Line on 0800 585 505.

Students with a disability/special need who are resident in the UK may also be able to apply for a Disabled Student Allowance (DSA). For a copy of the information leaflet (which answers most of the questions commonly asked about DSAs) please contact either your LEA or the Student Support Information Line on 0800 731 9133 or on textphone 0800 210 280. This information is also available on audio tape or in braille. The guide is also available on www.direct.gov.uk/dsa

Students who are members of the UK Armed Forces should note that the University of London has been approved by the Ministry of Defence in support of the Enhanced Learning Credits (ELC) Scheme (ELC Provider Reference Number 1284). The Scheme provides financial support to eligible Service personnel who wish to enhance their educational or vocational achievements. The ELC administration Service website can be found at: www.enhancedlearningcredits.co.uk

Scholarships/Bursaries

Occasionally the Royal Veterinary College receives notification of scholarships offered by third parties for these courses. Such scholarships usually have strict application criteria and further information can be found on our website: www.londonexternal.ac.uk/rvc



Information about other programmes

If you would like information about any of the other programmes listed on the back cover of this prospectus, please contact our Information Centre:

University of London
Senate House
Malet Street
London WC1E 7HU
United Kingdom

Tel: +44 (0)20 7862 8360/1/2
Fax: +44 (0)20 7862 8358
Email: enquiries@london.ac.uk

or visit our website:

www.londonexternal.ac.uk

Please give your full postal address when contacting the Information Centre.

Personal callers

If you are in London at any time and would like to meet a particular member of staff, you are most welcome. Most of our offices are open between 9.00am and 5.30pm Monday to Friday, but you are advised to telephone first to make an appointment to ensure that the person you want to see is available.

Alternatively, if you would like to make an appointment to meet the Course Director at the Hawkshead Campus of the Royal Veterinary College (20 minutes train journey from Kings Cross, Central London) then please email: dip@rvc.ac.uk or telephone on +44 (0)1707 666356.



Working for an MSc in my spare time has required considerable commitment and was a real challenge. I have really enjoyed the opportunity to

study for a postgraduate degree though, and the knowledge that I have gained has proved to be invaluable in my job. I am even contemplating further postgraduate study!

Mary Logan

MSc in Veterinary Epidemiology and Public Health, UK.

Mary graduated with Distinction in December 2006.

Important note: The External System aims to provide the highest quality service to its students. We endeavour to solve any problems you experience quickly and fairly. If, however, you wish to make a complaint, our complaints procedure is published on our website and in our Student Handbooks.

Key points

- **Quality** – these programmes have been developed by academics at the Royal Veterinary College (RVC), the oldest and largest veterinary school in the UK and one of the leading veterinary research centres in Europe. In 1999, RVC became the first UK veterinary school to be granted approval by the American Veterinary Medical Association.
- **International relevance** – the programmes in this prospectus will be of interest to veterinarians, livestock farmers and scientists who wish to continue their professional and academic development. They have been designed to be of worldwide relevance, and offer options that are suitable for people of diverse professional backgrounds.
- **Comprehensive study materials and support** – this includes academic feedback on written assignments; tutorial support concerning academic matters from RVC staff; opportunities for local networking and mutual support from other students on the programme. As all of the study materials you require are mailed to you, you don't have to purchase expensive textbooks or spend time trying to locate journals, which may not be available to you locally.
- **Continuing Professional Development** – Short courses, either 240-hour, 50-hour or 35-hour, are ideal if you're keen to update your professional knowledge, enhance your career, or sample the programme.
- **Flexibility** – studying by distance learning provides an excellent opportunity for those with work or family commitments to gain a prestigious University of London qualification without coming to London. You have between 2-5 years to complete the MSc degree, and between 1-5 years to complete the Postgraduate Diploma or Postgraduate Certificate.
- **Questions about the programme** – this prospectus has been written to answer the typical questions a student asks before submitting an application. If, however, after reading it carefully, you find that you still have questions that need answering, please contact: The Distance Learning Unit, The Royal Veterinary College, Hawkshead Lane, Hatfield, Hertfordshire AL9 7TA. Tel: +44 (0)1707 666356, Fax: +44 (0)1707 666877, Email: DLP@rvc.ac.uk

Summary of key dates

(for the MSc degree, Postgraduate Diploma and Postgraduate Certificate **only**)

1 November	Application deadline
1 January	Registration deadline
October	Examinations take place

Notes:

- Short course students (240-hour, 50-hour and 35-hour) should be aware that there is a rolling application and registration process.

Information for students with a disability and/or special needs

The University has a panel that considers applications from students for special examination arrangements.

The University has a panel that considers applications for special examination arrangements. The aim of the panel is to ensure that a student with a disability is not advantaged or disadvantaged when compared with other students. If you have a disability/special need and may need special examination arrangements (such as extra time or special aids), or as a result of your condition/circumstances, you may wish to apply for your study materials to be provided in an alternative format (e.g. large print), you should complete the relevant section of the application form. You should also write to the Special Needs Coordinator at the following

address enclosing medical or other supporting evidence:

Special Needs Coordinator
The External System
University of London
Ground floor, Stewart House
32 Russell Square
London WC1B 5DN
United Kingdom
Fax: +44 (0)20 7862 8349
email: specialneeds@london.ac.uk

You can request a copy of the University of London's full disability statement. Please refer to the Information Centre contact details on the back of this prospectus, or download it from our website: www.londonexternal.ac.uk/dissn

Study programmes

The University of London offers a wide range of subjects for study at a distance; from full degree programmes to diplomas, certificates and short courses.

Undergraduate

Accounting	Economics and Management	Law
Accounting and Finance	English	Law with Accounting
Accounting with Law	Finance	Law with Management
Banking	French	Management
Banking and Finance	French and German	Management with Law
Business	Geography and Environment	Mathematics and Economics
Business Administration	German	Philosophy
Classical Studies	German and Italian	Politics
Computing and Information Systems	History	Politics and International Relations
Creative Computing	Information Systems	Social Sciences
Development	Information Systems and Management	Sociology
Development and Economics	International Relations	Sociology with Law
Divinity	Italian	Spanish and Latin American Studies
Economics	Italian and French	Theology
Economics and Finance		

Postgraduate

Agribusiness for Development	Environmental Management	Livestock Health and Production
Agricultural Economics	Epidemiology	Managing Rural Development
Applied Educational Leadership and Management	Finance and Financial Law	Organizational Psychology
Applied Environmental Economics	Financial Economics	Policy Studies
Banking	Financial Management	Public Financial Management
Biodiversity Conservation and Management	Human Resource Management	Public Health
Citizenship and History Education	Infectious Diseases	Public Management
Clinical Trials	Information Security	Public Policy and Management
Economic Principles	International Management	Sustainable Development
Educational and Social Research	International Management (China)	Veterinary Epidemiology and Public Health
	International Primary Health Care	
	Law	

For details see our website or contact:

The Information Centre, University of London, Senate House,
Malet Street, London WC1E 7HU, United Kingdom.

Tel: +44 (0)20 7862 8360/1/2 Fax: +44 (0)20 7862 8358 Email: enquiries@london.ac.uk

www.londonexternal.ac.uk

All programmes are developed, written and assessed by academics at the various Colleges of the University. Currently these include: Birkbeck, Goldsmiths, Heythrop College, Institute of Education, King's College London, The London School of Economics and Political Science, London School of Hygiene & Tropical Medicine, Queen Mary, Royal Holloway, Royal Veterinary College, School of Oriental and African Studies, UCL (University College London).